



Profiles:

All gratings are provided with a safe-profile seal which has been tested for non-slip properties by the German Institut der Säurefließner-Vereinigung (Research and Advisory Institute for Wall and Floor Coverings) and meets the criteria of classification C.

In addition to straight profiles, radial-profiles can also be provided under certain circumstances. Both mitred and rigid versions of corners are available.* emco 724 swimming pool gratings are available in widths ranging from 100 to 340 mm as standard: these do not require any additional supports. Longer widths can, however, also be produced with the aid of channel supports provided on site – so the possibilities in terms of design are virtually endless.

Full details:

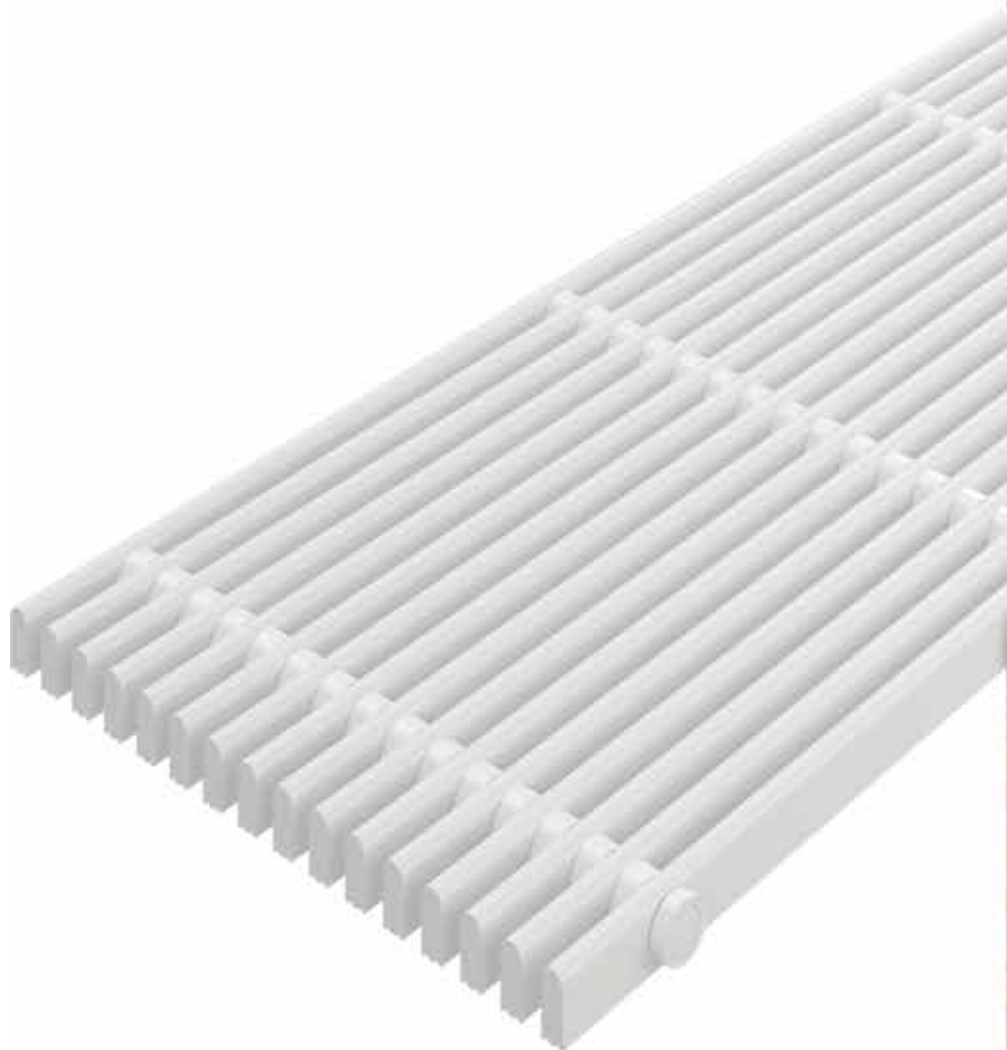
www.emco-bau.com
www.ausschreiben.de

Features:

- Excellent water drainage
- Excellent technical features
- Custom application options

Can be used in:

- Public and private swimming pools with overflow channels
- Whirlpools with overflow channels



Standard colours:



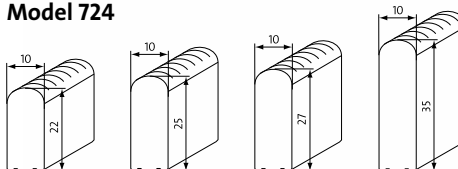
white, similar to RAL 9010 grey, similar to RAL 7001 beige, similar to RAL 1001 yellow, similar to RAL 1018

Special colours: On request

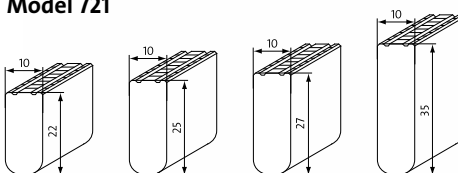
Specifications:

Model**	Height (mm)	Grating width (mm)
724/22	22	100 - 300
724/25	25	100 - 340
724/27	27	100 - 340
724/35	35	100 - 340

Model 724



Model 721



* For corner solutions and special shapes, s. p. 17

**Also applies to type 720

emco swimming pool gratings

Model 724

Swimming pool gratings running parallel to the pool edge, in rigid design (rounded upper profile surface: model 724; flat upper profile surface: model 721). Fibre-glass reinforced polyester pipes as connection elements. Profile spacing in accordance with DIN EN 13451-1 and DIN EN 16582-1.

